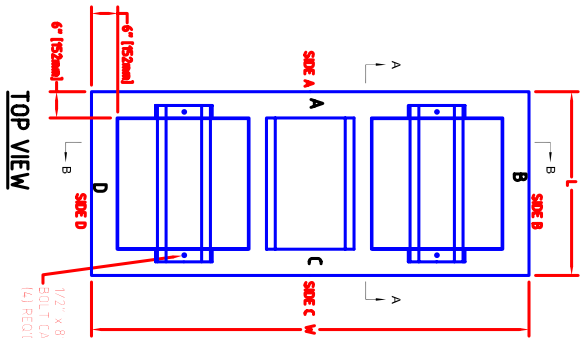
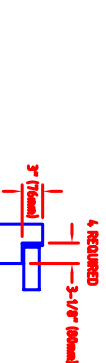


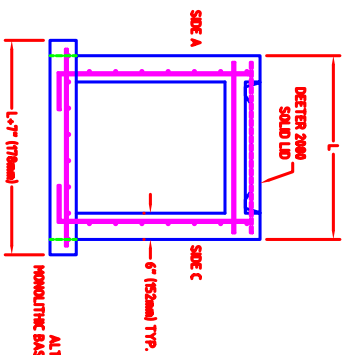
KDOT TYPE 2 DITCH INLET



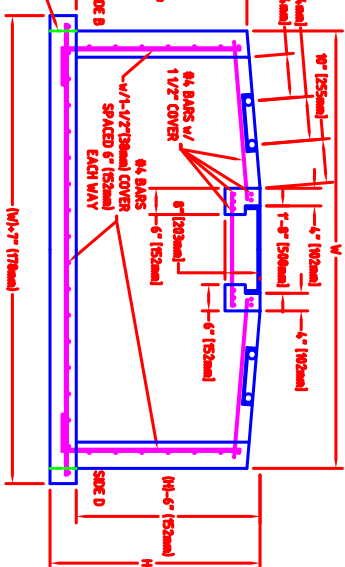
1/2" x 8" GALVANIZED ANCHOR BOLT CAST INTO PRECAST STRUCTURE (4) REQ'D.



DETAIL



ALTERNATE DESIGN MONOLITHIC BASE MAY BE USED



SECTION "A-A"

SECTION "B-B"